

ZOOMLION



# Zoomlion Telehandlers

---

## Catalogs

- 1 Telehandler Products Description**
- 2 Non-Rotating Telehandler and Competitive advantages**
- 3 Rotating Telehandler and Competitive Advantages**



# 01

## Telehandler Products Description



# Telehandler Series Description

## Non-Rotating

ZTH2506  
ZTH3507  
ZTH3513  
ZTH4014  
ZTH4018  
ZTH4517\*

## Rotating

ZTH4518R  
ZTH4525R

## Accessories

ZAFFC-1040-35  
ZAFFC-1040-45  
ZAERP-4000-1000  
ZAEJ-3000-2000  
ZACB-2300-820  
ZAWBC-800  
ZABFC-1250-1600



## ○ Highlights

ZOOMLION Telehandler has the features of safety, reliability, high efficiency, etc. Smooth boom extension, excellent cross-country travelling performance, flexible steering, and able to quickly change the different attachments for lifting, loading, grasping, moving.

It is suitable for installation and material handling in many fields such as construction, municipal maintenance, agriculture, logistics, mining, petrochemical industry, indoor and outdoor construction of large-scale plants and venues, wharves, airports and ports, advertising and film.



# 02

## Non-Rotating Telehandler and Competitive Advantages



# Description of Non-Rotating Series Products



- **6 to 17m** working height, widely used in building construction, plant construction, municipal maintenance, agriculture and animal husbandry, mining, bridge and tunnel operations
- Adopting **four-wheel driving**, with multiple steering modes, standard equipped with limited-slip differential lock, strong adaptability to harsh working conditions, and excellent off-road performance
- Non-rotating series products have obvious advantages in terms of stability, high efficiency, safety, easy maintenance and intelligence



# Parameter of Non-Rotating Products

	Model	ZTH2506	ZTH3507	ZTH3513	ZTH4517
<b>Working Performance</b>	Maximum operating height m	6.1	7	12.7	17.2
	Maximum operating height load kg	2000	3000	3500	3000
	Rated operating load kg	2500	3500	3500	4500
	Maximum reach m	3.5	3.91	8.75	12.8
	Maximum forward load kg	800	1200	1000	1361
	Minimum turning radius m	3.38	3.87	3.8	4.2
	Maximum speed km/h	27	33.8	32.5	36
<b>Dynamic System</b>	Engine type	KUBOTA V3307	Cummins QSF 3.8	Cummins QSF 3.8	Cummins QSF 3.8
	power kW	55.4	74	74	97
	torque Nm	267	420	420	488
<b>Working Hours</b>	Boom expansion time s	5.7/4.5	7.82/5.55	12.7/8	17.2/9.4
	Amplitude pitch time s	7.9/5.2	7.04/5.04	10.2/8	15.3/11
	Fork pitch s	3.5/3.5	2.89/2.89	4.6/4	3.9/3
<b>Other</b>	Overall dimensions (length × width × height) m	4.01×1.83×1.95	4.79×2.25×2.49	5.84×2.28×2.55	6.16×2.45×2.56
	weight kg	5000	7200	9880	14500

# Product Highlights



Double differential lock for better off-road performance.  
Large load design, strong working ability.

**Property**

**safe**

28 safety detection functions  
Anti-tip safety system  
Auto-hold function

Deluxe cab for more comfortable handling.  
Hydrostatic drive, driving without impact.  
Buffer control, soft start and stop

**Comfort**

**Efficient**

Load sensitive system, composite operation faster  
One-click positioning, work efficiency increased by 20%  
Multi-speed mode, micro operation is

## Product Highlights



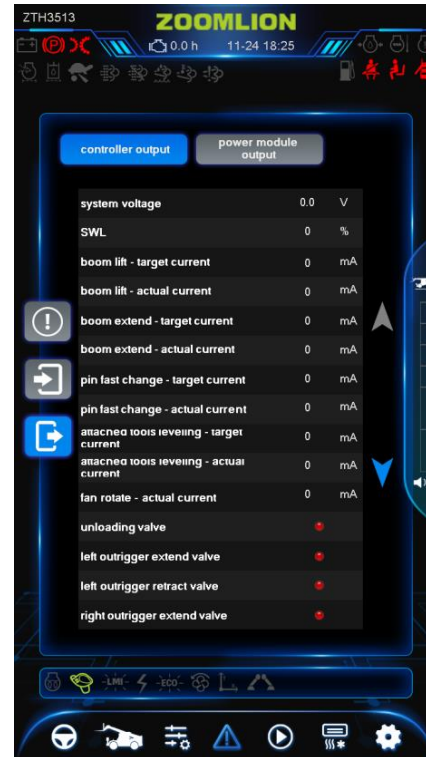
### Luxury Cab

- Suspension seat for best operator comfort; ergonomic one-handed control joystick, the operation is easier; 10.1-inch display screen, integrating monitor, control, and entertainment for good human-machine interaction experience; standard cold and warm air condition, ensure that the driver has been in the most comfortable temperature; standard work lights for good visibility of the operation at night.

# Product Highlights



Fault Alarm Alert



Trouble Alarm Point Indication

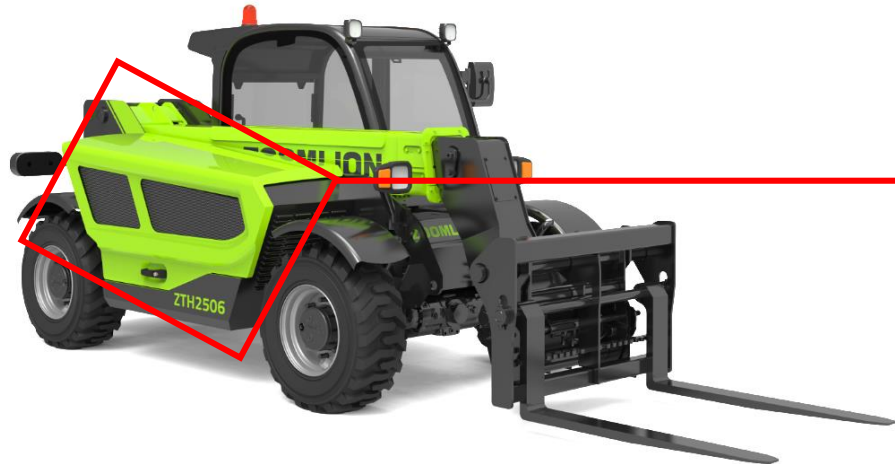
## Detailed Troubleshooting Alarms and Fault Descriptions

- Fault alarm prompts accurate and timely, effectively preventing the vehicle from causing further damage
- Fault diagnosis is divided into three levels, the first level of prompts that the current vehicle has a fault, into the first diagnostic mode can see the second level of fault prompts the specific location, into the third level of diagnostic mode can see the fault detailed instructions

# Product Highlights

## The Integral Open Hood is More Convenient to Maintain

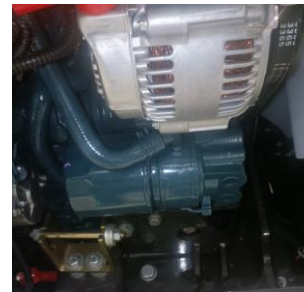
Adopting the open-close hood, there is plenty of space on the side and top of the engine compartment, and the parts that need to be inspected and maintained are on the side and top of the engine, with no blockage around them for better accessibility



Integral hood opens without blocking the top oil filler port, etc., making it easy to replenish the oil.



Air and fuel filters can be serviced directly from the side with no obstructions.

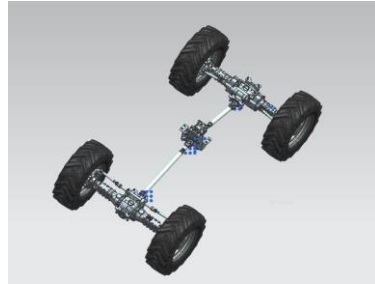


Oil filter, dipstick, etc. on the side of the engine with no obstructions

# ● ZTH2506 Product Advantages



- The wheelbase is 2350mm and the width of the whole vehicle is 1830mm, compact and flexible. Maximum working height is 6.1 metres, wide working range, strong loading capacity, good working performance.



- Maximum travelling speed of 27km/h, fast steering speed, high efficiency  
Maximum traction force is 43.25KN, front and rear axles are equipped with limited-slip differential, off-road performance.

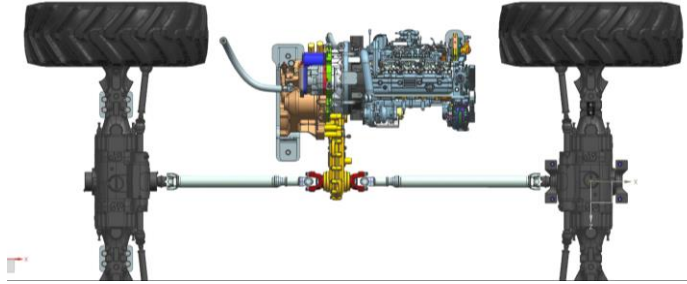


- Fit in container, easy and efficient to transport at low cost

# ○ ZTH2506 Competitive Advantages

Model	ZTH2506	Competitor1	Comparison	
Working Performance	Maximum operating height m	6.1	5.74	<b>Excellent: Wider work range</b>
	Maximum operating height load kg	2000	1995	same
	Rated operating load kg	2500	2495	
	Maximum reach m	3.5	3.4	<b>Excellent: Wider work range</b>
	Maximum forward load kg	800	862	Bad: Lower load capacity than competing products
	Minimum turning radius m	3.38	3.35	same
	Maximum speed km/h	27	24	<b>Excellent: High working efficiency</b>
Dynamic System	Engine type	KUBOTA V3307	dutez TD2.9	same
	power kW	55.4	55.4	same
	torque Nm	267	260	相当
Working Hours	Boom expansion time s	5.7/4.5	8/4	<b>Excellent: High working efficiency</b>
	Amplitude pitch time s	7.9/5.2	8/7	
	Fork pitch s	3.5/3.5	5/4	
Other	Overall dimensions (length × width × height) m	3.88×1.83×1.95	3.73×1.81×1.98	same
	weight kg	5000	4700	Bad: too heavy
	locking differentia	Axle configuration	Front axle only	<b>Excellent: Strong off-road performance</b>

# ○ ZTH3507 Product Advantages



- Travelling with hydrodynamic drive, driving strong and powerful maximum driving speed of 33.8km/h, fast steering speed, high efficiency maximum traction force of 76KN, front and rear axles are equipped with limited slip differential, off-road performance.



- 10.1-inch display, good human-computer interaction experience  
Configuration of centralised power management system, intelligent and efficient fault handling

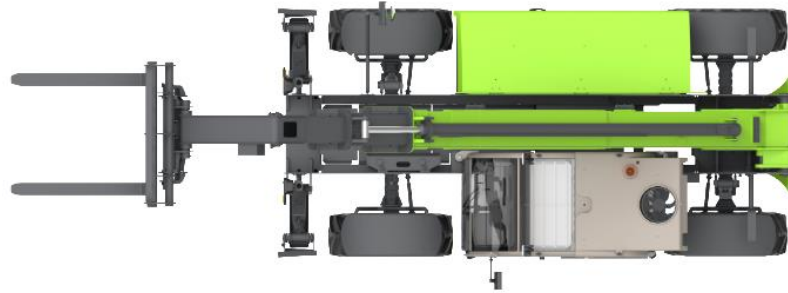


- Fit in container, easy and efficient to transport at low cost

# ZTH3507 Competitive Advantages

	Model	ZTH3507	Competitor 1	Comparison
Working Performance	Maximum operating height m	7	6.9	same
	Maximum operating height load kg	3000	3000	same
	Rated operating load kg	3500	3500	same
	Maximum reach m	3.91	3.9	same
	Maximum forward load kg	1200	1200	same
	Minimum turning radius m	3.87	3.86	same
	Maximum speed km/h	33.8	32.5	<b>Excellent: High working efficiency</b>
Dynamic System	Engine type	Cummins QSF 3.8	Perkins/1104D-44 TA	same
	power kW	74	74	same
	torque Nm	420	410	same
Dynamic System	Boom expansion time s	7.82/5.55	8.2/6.6	<b>Excellent: High working efficiency</b>
	Amplitude pitch time s	7.04/5.04	7.3/5.6	
	Fork pitch s	2.89/2.89	3.2/2.7	
Other	Overall dimensions (length × width × height) m	4.79×2.25×2.49	4.79×2.4×2.3	<b>Better flexibility</b>
	weight kg	7200	7050	Inferior: too heavy
	locking differentia	Axle configuration	Front axle only	<b>Excellent: Strong off-road performance</b>

# ○ ZTH3513 Product Advantages



- Maximum traction force is 82KN, front and rear axles are equipped with differential locks, strong off-road performance. Maximum travelling speed is 32.5km/h, fast transfer speed and high efficiency.



- Three-section main boom, double cylinder synchronous telescopic arm, strong load capacity, maximum lifting height load 3500kg.



- Fit in container, easy and efficient to transport at low cost

# ZTH3513 Competitive Advantages

	Model	ZTH3513	Competitor 1	Comparison
Working Performance	Maximum operating height m	12.7	12.55	<b>Wide work range</b>
	Maximum operating height load kg	3500	3500	same
	Rated operating load kg	3500	3500	same
	Maximum reach m	8.75	8.75	same
	Maximum forward load kg	1000	1000	same
	Minimum turning radius m	3.8	3.65	same
	Maximum speed km/h	32.5	25	<b>High working efficiency</b>
Dynamic System	Engine type	Cummins QSF 3.8	Perkins/854E-34TA	same
	power kW	74	75	same
	torque Nm	420	430	same
Dynamic System	Boom expansion time s	12.7/8	14.6/10.4	<b>High working efficiency</b>
	Amplitude pitch time s	10.2/8	10.2/8.9	
	Fork pitch s	4.6/4	5/4	
Other	Overall dimensions (length × width × height) m	5.84×2.28×2.55	5.86×2.21×2.42	same
	weight kg	9880	9300	High working efficiency
	locking differentia	前后桥配置	仅前桥配置	<b>Strong off-road performance</b>

# Product Applications

Ideal for material handling and lifting in construction, municipal, petrochemical, large-scale plants and venues.



# 03

## Rotating Telehandler and Competitive Advantages



## ○ Description of Rotating Model Series Products

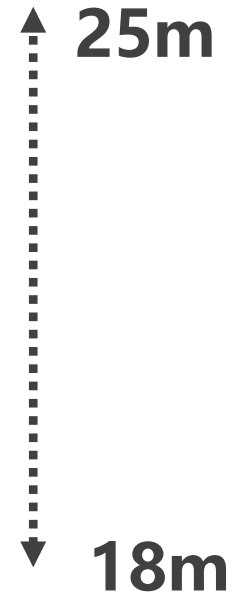
- High coverage **18 to 25m** widely used in building construction, plant construction, house decoration and maintenance, harbours, factories and other operations.
- Hydrostatic transmission for smooth running and easy maintenance.
- 2 products of rotating series , load-sensitive hydraulic system for precise action, low power loss, and energy saving



ZTH4518R



ZTH4525R



## Parameter of Rotating Products

Model		ZTH4518R	ZTH4525R
Working Performance	Maximum operating height m	18.01	24.8
	Maximum operating height load kg	3000	2000
	Rated operating load kg	4500	4500
	Maximum reach m	15.1	19
	Maximum forward load kg	600	300
	Minimum turning radius m	3.6	4.21
	Maximum speed km/h	38	32
Dynamic System	Engine type	Cummins F4.5	Cummins F4.5
	power kW	89	89
	torque Nm	500	500
Other	Turning mode	360°Continuous rotation	360°Continuous rotation
	Overall dimensions (length × width × height) m	7.33×2.45×3.11	8.9×2.48×3.05
	weight kg	14500	16670

# Highlights



Property

safe

Comfort

Efficient

Double differential lock for better off-road performance  
Large load design, strong working ability  
Maximum speed 38km/h

42 safety detection functions  
Automatic identification of accessories  
Meet FOPS&ROPS requirements

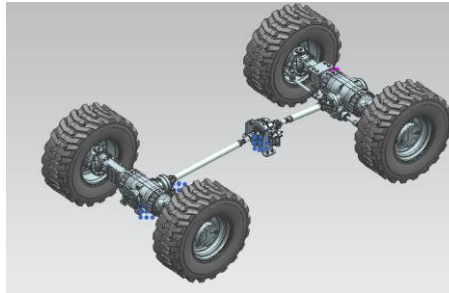
Deluxe cab for more comfortable handling  
10.1-inch screen  
Buffer control, soft start and stop

Bus valve control, more accurate and efficient operation  
One-click positioning technology, work efficiency increased by 20%  
Multi-speed mode, micro operation is more convenient

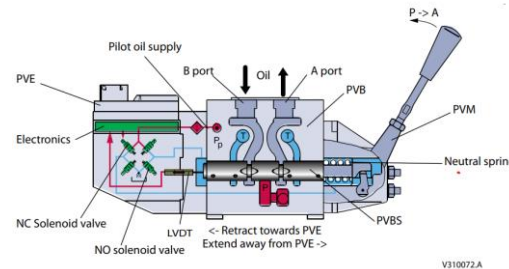
# ● ZTH4518R Product Advantages



- **Built-in pipework arrangement, compact structure, less accidental collision, lower risk of failure**



- **Equipped with multi-point visual system, it can monitor the boom head, the right rear and the right rear screen in real time through the display screen, with high operational safety. Front and rear axles are equipped with differential locks, strong off-road performance, auto-hold technology, more comfortable operation.**



- **Adopting digital multi-way valve, high control precision, superior handling performance; using piston pump, large flow, higher operating efficiency**

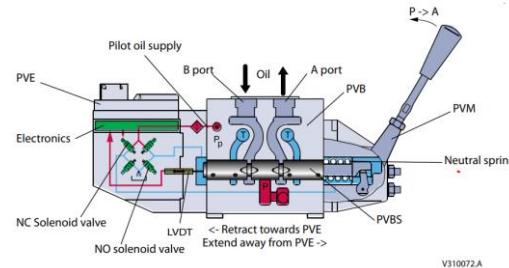
# ○ ZTH4518R Competitive Advantages

model	ZTH4518R	Competitor 1	Comparison	
Working performance	Maximum operating height m	18.01	18	
	Maximum operating height load kg	3000	2700	<b>Excellent: wide work range</b>
	Rated operating load kg	4500	4500	
	Maximum reach m	15.1	15.2	
	Maximum forward load kg	600	600	
	Minimum turning radius m	3.6	3.6	
	Maximum speed km/h	38	38	
Dynamic system	Engine type	Cummins F4.5	Deutz TCD 3.6	
	power kW	89	85	<b>Excellent: strong power</b>
	torque Nm	500	460	
other	Turning mode	360° continuous	360° continuous	
	Overall dimensions (length × width × height) m	7.33×2.45×3.11	7.26×2.45×3.04	
	weight kg	14700	14100	Inferior: heavier
	Differential lock	Front and rear axles	Front axle only	<b>Excellent: better off-road ability</b>

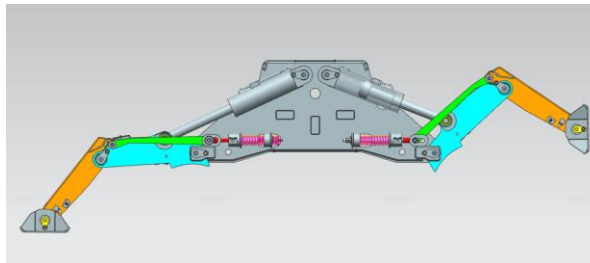
# ● ZTH4525R Product Advantages



- Built-in pipework arrangement, compact structure, less accidental collision, lower risk of failure.



- Adopting digital multi-way valve, high control precision, superior handling performance; using piston pump, large flow, higher operating efficiency.



- New outrigger design, higher ground clearance, automatic levelling, adapting to diversified working conditions.

# ○ ZTH4525R Competitive Advantages

Model	ZTH4525R	Competitor 1	Comparison	
Working performance	Maximum operating height m	24.8	24.7	
	Maximum operating height load kg	2000	2000	
	Rated operating load kg	4500	4500	
	Maximum reach m	19	19.4	Inferior: max outreach is smaller
	Maximum forward load kg	300	300	
	Minimum turning radius m	4.21	4.62	
	Maximum speed km/h	32	32	
Dynamic System	Engine type	Cummins F4.5	Deutz TCD 3.6	
	power kW	89	85	<b>Excellent: strong power</b>
	torque Nm	500	460	
Other	Turning mode	360° continuous	360° continuous	
	Overall dimensions (length × width × height) m	8.9×2.48×3.05	8.9×2.49×3.05	
	weight kg	16670	15943	Inferior: heavier
	Differential lock	Front and rear axles	Front axle only	<b>Excellent: better off-road ability</b>

# ○ Applications

Suitable for civil buildings, large venues, heavy industrial plants, municipal bridges, electric power and other construction, maintenance and construction environment.



**Power  
Constructions**



**Construction  
Projects**

# 03

## Telehandler Product Certifications



## Product Certifications

Model	ZTH2506	ZTH3507	ZTH3513	ZTH4518R	ZTH4525R
CE	2024-1-10	2024-1-10	2024-1-10	2024-2-20	2024-2-20
ANSI	/	/	/	/	/

**ZOOMLION**

# Thanks!



**Zoomlion Intelligent Access Machinery Co., Ltd.**

Address: 701 Xulong Nan Lu, Xiangjiang New District, Changsha,  
Hunan Zip Code: 410209  
<http://www.zoomlion-access.com>

Tel: 400-800-0157

