



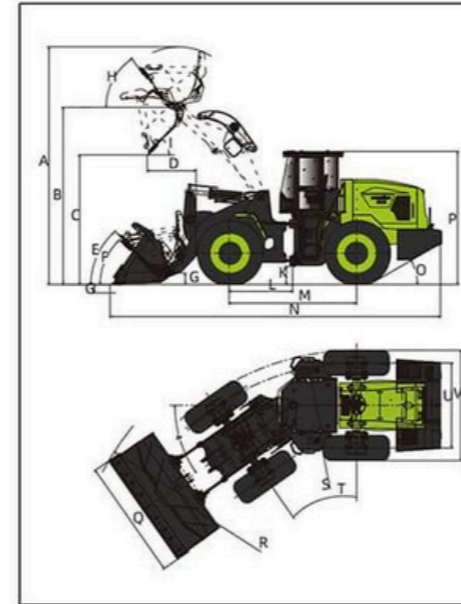
LG866H-E ELECTRIC WHEEL LOADER

LONKING (FU JIAN) INTERNATIONAL TRADE CO.,LTD.
 Add: 26 Minyi Road,Xinqiao,Songjiang Industrial Zone,Shanghai
 E-mail: export@lonking.cn <http://www.lonkinggroup.com>
 Tel: +86-21-3760 2242

- BUCKET CAPACITY: 4.2m³
- RATED PAYLOAD: 6500kg
- OPERATING WEIGHT: 21900±300kg

DIMENSIONS

All dimensions are approximate. Dimensions may vary with bucket and tire choice. Refer to operating specifications.



NO.	DESCRIPTION	UNIT	DATA
A	Overall Height – Bucket Raised	mm	5760
B	Bucket Pin Height at Max. Lift	mm	4720
C	Dump Clearance at Max. Lift (45°)	mm	3400
D	Reach at Max. Lift and 45° Dump	mm	1300
E	Rack Back Angle at Carry	°	48
F	Rack Back Angle at Ground	°	46
G	Digging Depth	mm	1030
H	Rack Back Angle at Max. Lift	°	56
I	Dump Angle at Max. Lift	°	45
J	Carry Height	mm	3600
K	Ground Clearance	mm	500
L	Center Line of Front Axle to Hitch	mm	1700
M	Wheel Base	mm	3400
N	Overall Length	mm	8910
O	Departure Angle	°	30
P	Height to Top of Cab	mm	3540
Q	Overall Width over Bucket	mm	3200
R	Min. Turning Radius over Bucket	mm	7880
S	Min. Turning Radius over Tires	mm	6860
T	Steering Angle – Left/Right	°	35
U	Width at Tread Center	mm	2270
V	Overall Width over Tires	mm	2945

TECHNICAL PARAMETERS

Basic	Bucket Capacity	4.2m ³
	Rated Payload	6500kg
	Operating Weight	21900±300kg
	Traction Force	195±5kN
	Breakout Force	210±5kN
L×W×H		8910×3200×3540mm
battery system	Maker	CATL
	Type	LFP
	Rated Storage Energy	350kwh
	Nominal Voltage	580V
Type Of Cooling		Water-Cooling
Travelling Motor	Rated Power	120kw
	Rated Torque	1200N·m
	Rated Speed	956rpm
Type Of Cooling		Water-Cooling
Pump Motor	Rated Power	105kw
	Rated Torque	560N·m
	Rated Speed	1800rpm
	Type Of Cooling	
DRIVE TRAIN	Type Of Transmission	Countershaft
	Shift Type	Electronic Powershift Control
	Axles	Rigid (Front)&Oscillating (Rear)
	Rear Axle Oscillation (°)	±8°
	Differential	Conventional
	Main Reducer	Spiral Bevel, 1-stage Reduction
	Final Reducer	Planetary Reduction
	Tire	26.5-25 24PR
	Travel Speed-Forward	12/38 km/h
	Travel Speed-Reverse	17 km/h
BRAKE SYSTEM	Service Brake	Full Hydraulic Braking
	Setting Pressure	12 MPa
	Parking Brake	Electric Control Handbrake
Emergency Brake		
STEERING SYSTEM	Type	Hydraulic Load Sensing System
	Pump	90ml/r
	System Pressure	15MPa
	Cylinder Type	Double Acting
Steering Angle		±35°
HYDRAULIC SYSTEM	Type	Joystick Control (Single-lever)
	Pump	112ml/r
	Control Valve	2 Spool
	System Pressure	19MPa
Cycle Time (Sec)		10.5
SERVICE REFILL CAPACITY	Hydraulic Tank (L)	270L
	Transmission (L)	10.5L
	Front Axle/Rear Axle (L)	28L/28L

CONFIGURATION

CATL Lithium Battery
LONKING Transmission
Electronic Powershift Control
LONKING Axles (Dry type)
Joystick Working Control (Single-lever)
Pneumatic drum brake
ROPS&FOPS Cabin
LCD Dashboard
Air Conditioner
Rear View Camera

OPTIONAL

423kwh Extra Capacity Battery
300kw Charging Pile
360kw Charging Pile
Electric Heating Rear Window
Bucket(7.0m ³ , 3 Piece Cutting Edges)

The following blank can be used for notes or comments

For more information on Lonking products, please contact our local agent:

Lonking, Lonking CEM Series and their respective logos, as well as corporate identity in this leaflet are trademarks of Lonking Holdings Ltd. and may not be used without written permission.
2024/02

Specifications and design are subject to change without prior notice. Machines shown may not include optional accessories.

New generation LG866H-E EV wheel loader

LG866H-E is 6 tonnage 100% EV wheel loader newly developed by LONKING. The whole machine adopts the 4th platform and the third generation electric technology. The whole machine is advanced and efficient, intelligent and comfortable, strong adaptability to working conditions, stable operation and high efficiency.

Zero pollution, low cost, high quality, high efficiency



Product presentation:

- Battery capacity 350KW·h, 282KW·h and 423KW·h battery as optional.
- According to different materials and working conditions, 3.5-7.0m bucket can be selected, and a variety of accessories such as side unloading and wood fork can be selected.
- The whole machine has large traction and digging force, strong power and efficient operation.
- The intelligent battery thermal management system of the whole machine makes the whole machine quickly complete charging and is in the best working state.



Strong power, flexible and efficient operation

- The machine has strong power, flexible and efficient operation.
- High efficiency, high torque, low noise motor provides strong power for the whole machine.
- The whole machine is equipped with a variety of power modes to ensure stable power to adapt to various harsh conditions.
- Large dumping joint span heavy structural parts, using finite element analysis technology, reduce stress concentration, Full hydraulic clamp disc four-wheel brake, safe and reliable, smooth braking.
- Strong processing and manufacturing capacity, structural parts using robot welding, to ensure the quality of weld, in harsh conditions can still ensure the high reliability of structural parts.



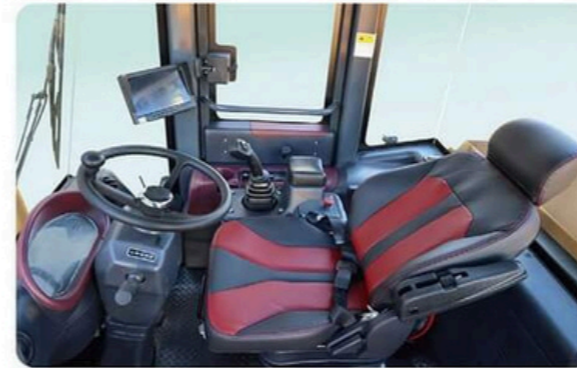
More energy efficient and longer working

- The high power traction motor is matched with the fixed shaft transmission, and the energy consumption of the whole machine is lower per hour under comprehensive conditions.
- The transmission adopts electronic control shift technology, and the shift is smooth without equal gear, and the operation is coherent and high efficiency.
- High performance battery charging time is short, recharge speed is fast, to meet the requirements of continuous operation.



More intelligent and much safer

- Hidden charging port, convenient charging and more thoughtful protection.
- The whole machine with intelligent charge management system, no manual charge management.
- The intelligent monitoring system of the cloud platform monitors the running status of the cloud platform.
- Intelligent ATS heat dissipation system Intelligent operation according to heat dissipation requirements, energy saving and high efficiency.



Precise and light driving is easy and comfortable

- Full hydraulic steering and working device pilot control, accurate operation, light, international trend of the new appearance, high-grade cab, spacious space, wide field of vision, new sensory cockpit design, driving comfort.
- Equipped with liquid display multi-function digital instrument, rich information display to better control the working state.
- Throttle opening adjustment motor speed, with the pilot handle FNR quick reversing function key, to achieve the whole machine variable speed reversing flexible control, more efficient operation.

