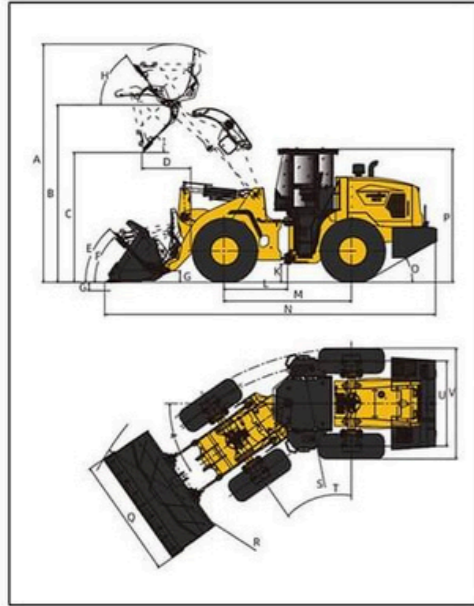


DIMENSIONS

All dimensions are approximate. Dimensions may vary with bucket and tire choice. Refer to operating specifications.



NO.	DESCRIPTION	UNIT	DATA	High Dump
A	Overall Height – Bucket Raised	mm	5560	5890
B	Bucket Pin Height at Max. Lift	mm	4164	4520
C	Dump Clearance at Max. Lift (45°)	mm	3100	3360
D	Reach at Max. Lift and 45° Dump	mm	1260	1370
E	Rack Back Angle at Carry	°	46	46
F	Rack Back Angle at Ground	°	43	44
G	Digging Depth	mm	42	125
H	Rack Back Angle at Max. Lift	°	53	53
I	Dump Angle at Max. Lift	°	45	45
J	Carry Height	mm	400	400
K	Ground Clearance	mm	398	398
L	Center Line of Front Axle to Hitch	mm	1650	1650
M	Wheel Base	mm	3350	3350
N	Overall Length	mm	8320	8810
O	Departure Angle	°	28	28
P	Height to Top of Cab	mm	3400	3400
Q	Overall Width over Bucket	mm	3000	3140
R	Min. Turning Radius over Bucket	mm	7386	7530
S	Min. Turning Radius over Tires	mm	6650	6650
T	Steering Angle – Left/Right	°	35	35
U	Width at Tread Center	mm	2240	2240
V	Overall Width over Tires	mm	2835	2835

TECHNICAL PARAMETERS

BASIC	Bucket Capacity	3.6m ³
	Rated Payload	5500kg
	Operating Weight	17200±300kg
	Traction Force	185±3kN
	Breakout Force	162±5kN
	L×W×H	8270×3100×3400mm
ENGINE	Maker/Model	Cummins/B6.7
	Rated Power	162kW/2200rpm
	Maximum Torque	1186N.m/1300rpm
	Bore x Stroke (mm)	107×124mm
	No. of Cylinders /Displacement	6/6.7L
	Air Cleaner	Three Stage Air Cleaner
	Alternator	70Amp
	Battery	2-N120-L
	Starting Motor	7.8kW
	DRIVE TRAIN	Transmission Type
Shift Type		Electronic Powershift Control
Pressure of Transmission		1.1-1.5MPa
Torque Converter Type		Single-stage, Duo-turbine, 4-element
Axles		Rigid (Front)&Oscillating (Rear)
Rear Axle Oscillation (°)		±10°
Differential		Conventional
Main Reducer		Spiral Bevel, 1-stage Reduction
Final Reducer		Planetary Reduction
Tire		23.5-25 L-3 16PR TT
Travel Speed-Forward		7/13.7/24.9/37.2 km/h
Travel Speed-Reverse		7.4/14.4/26.1 km/h
BRAKE SYSTEM	Service Brake	Full Hydraulic Wet Brake
	Setting Pressure	0.70-0.78MPa
	Parking Brake	Hydraulic Actuated Drum Brake
	Emergency Brake	Hydraulic Actuated Drum Brake
STEERING SYSTEM	Type	Hydraulic Load Sensing System
	Pump	165L/min 2200rpm
	System Pressure	15MPa
HYDRAULIC SYSTEM	Cylinder Type	Double Acting
	Steering Angle	±35°
	Type	Double Pump Confluence
	Pump	207L/min 2200rpm
	Control Valve	2 Spool
SERVICE REFILL CAPACITY	System Pressure	19MPa
	Cycle Time (Sec)	11
	Fuel Tank (L)	280L
	Hydraulic Tank (L)	180/185(3rd Spool)L
	Crankshaft (L)	17L
Transmission (L)	48L	
Front Axle/Rear Axle (L)	28L/28L	

CONFIGURATION

Cummins EPA Tier 4 F/ EU Stage V
ZF Transmission
Electronic Powershift Control
LONKING Axles (Wet type)
Joystick Working Control (Single-lever)
Hydraulic Actuated Drum Brake
ROPS&FOPS Cabin
LCD Dashboard
Air Conditioner
MP3
Air Suspension Seat

OPTIONAL

High Dump
Oil-bath Air Filter
Cold Starting(-35°C)
Radial Tires
24PR Tires
3rd Spool for Auxiliary Function
Sliding Cabin Window
Electric Heating Rear Window
Lockable Oil Tank Cap
Rear View Camera
Bucket(3 Piece Cutting Edges)
Rock Bucket(3.0m ³)
Coal Bucket(5.0m ³)
Log Grapple
Grass Grapple
Marble Fork
Log Fork
Quick Hitch Coupler
Quick Hitch Bucket(3.0m ³)
4in1 Bucket(Quick Hitch Only)

LONKING 龙工

CDM856H WHEEL LOADER

Efficiency Rules the Future



The following blank can be used for notes or comments.

For more information on Lonking products,
Please contact our local agent:

Lonking, Lonking CDM Series and their respective logos, as well as corporate identity in this leaflet are trademarks of Lonking Holdings Ltd., and may not be used without written permission.
2024/02

Specifications and design are subject to change without prior notice.
Machines shown may not include optional accessories.

LONKING (FU JIAN) INTERNATIONAL TRADE CO., LTD.
LONKING HOLDINGS LIMITED
Add: 26 Minyi Road, Xinqiao, Songjiang Industrial Zone, Shanghai
Tel: +86-21-3760 2242 E-mail: export@lonking.cn
http://www.lonkinggroup.com

- RATED POWER: 162kW/2200rpm rpm
- BUCKET CAPACITY: 3.6 m³
- RATED PAYLOAD: 5500 kg
- OPERATING WEIGHT: 17200±300 kg

New generation CDM856H wheel loader

CDM856H wheel loader is a new generation product that meets the Chinese stage IV emission standards. Its various technical performance indicators have reached the domestic leading level of the same tonnage, with exquisite structure, beautiful appearance, reliable quality, comfortable operation, and can adapt to different heavy-load operating conditions to meet the needs of various construction environments.



Heavy-duty structure, optimized design, high strength

- Reinforced design front and rear frames, greatly enhances the stability, torsion resistance and durability of the frame.
- Structural parts adopt finite element analysis and robot welding technology, with high torsion resistance coefficient and reliable welds.
- The 3350mm ultra-long wheelbase greatly increases the tipping load, enhances stability, and has excellent site adaptability.
- The sturdy and durable bucket with a large bucket capacity of 3.6m³ adopts a welded tooth body with high strength and a replaceable tooth sleeve design for easy maintenance.



Reinforced T&A, High Reliability and High Efficiency

- An efficient large-capacity torque converter can effectively reduce the power transmission energy loss.
- The LGQ280 heavy-duty drive axle produced by Lonking is more suitable for heavy-load conditions.
- A time-tested mechanical-hydraulic shift gearbox, which has a long service life, perfectly matches the high-power engine, better traction, better reliability.



Lower Energy Consumption, High Efficiency and Excellent Control

Equipped with CUMMINS Euro V engine, with high power efficiency and low energy consumption. Load-sensing full hydraulic steering for more precise control and smoother steering. Double-pump confluence system and pilot control as standard makes the operation convenient and flexible and high operation efficiency. Equipped with a multi-power fuel-saving switch and three-level power modes to meet different working conditions, fuel-saving and efficient.



New Appearance, High Comfort and Easy Maintenance

Equipped with Lonking's fourth-generation cab, bigger, more comfortable, more elegant appearance. High-precision liquid crystal display instrument accurately displays the working status of each main component. Both the front and rear working dome lights use LED lights, more energy-saving and longer service life. The newly designed steel integrated hood has a wide opening area for the side door, making maintenance more convenient. The multi-directional adjustable suspension seat can absorb the impact and vibration from the machine body, and with the front and rear adjustable steering wheel, can relieve operator fatigue. Equipped with Lonking's intelligent management system, users can control various operating data and conditions of the equipment in real time through mobile phones, computers and other devices, and conduct data analysis. Users can scientifically and efficiently manage equipment and improve equipment utilization.

