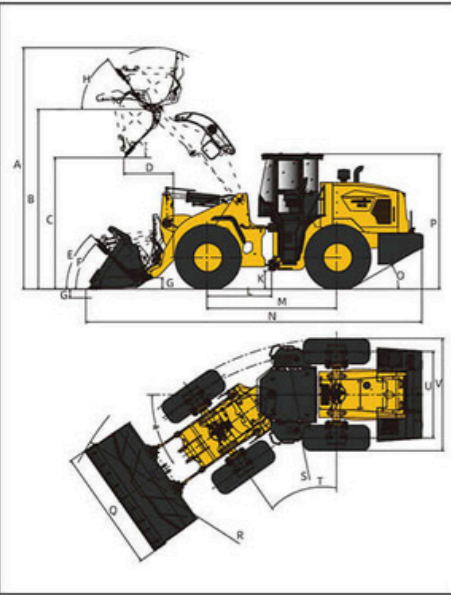


DIMENSIONS

All dimensions are approximate. Dimensions may vary with bucket and tire choice. Refer to operating specifications.



NO.	DESCRIPTION	UNIT	STD	High Dump
A	Overall Height - Bucket Raised	mm	4730	5060
B	Bucket Pin Height at Max. Lift	mm	3725	4034
C	Dump Clearance at Max. Lift (45°)	mm	2850	3160
D	Reach at Max. Lift and 45° Dump	mm	1140	1085
E	Rack Back Angle at Carry	°	46.2	50.9
F	Rack Back Angle at Ground	°	40.7	45
G	Digging Depth	mm	30-40	30-40
H	Rack Back Angle at Max. Lift	°	54.2	52.2
I	Dump Angle at Max. Lift	°	45	45
J	Carry Height	mm	400	400
K	Ground Clearance	mm	347	347
L	Center Line of Front Axle to Hitch	mm	1425	1425
M	Wheel Base	mm	2850	2850
N	Overall Length	mm	7520	7770
O	Departure Angle	°	27	27
P	Height to Top of Cab	mm	3180	3180
Q	Overall Width over Bucket	mm	2500	2500
R	Min. Turning Radius over Bucket	mm	6240	6240
S	Min. Turning Radius over Tires	mm	5680	5695
T	Steering Angle - Left/Right	°	35	35
U	Width at Tread Center	mm	1850	1850
V	Overall Width over Tires	mm	2320	2320

TECHNICAL PARAMETERS

BASIC	Bucket Capacity	1.8m ³
	Rated Payload	3500kg
	Operating Weight	(11400)11500 ± 300kg
	Traction Force	105±3kN
	Breakout Force	100±3kN
	L×W×H	7770×2500×3180mm
ENGINE	Maker/Model	Cummins/B4.5
	Rated Power	105kW/2200rpm
	Maximum Torque	580N·m/1400-1600rpm
	Bore x Stroke (mm)	107×124mm
	No. of Cylinders/Displacement	4/4.5L
	Air Cleaner	Three Stage Air Cleaner
	Alternator	70Amp
	Battery	2-105E-L
	Starting Motor	24V/4.8kW
	DRIVE TRAIN	Transmission Type
Shift Type		Electronic Powershift Control
Pressure of Transmission		1.1-1.5MPa
Torque Converter Type		Single stage&turbine, 3-element
Axles		Rigid (Front)&Oscillating (Rear)
Rear Axle Oscillation(°)		±10°
Differential		Conventional
Main Reducer		Spiral Bevel, 1-stage Reduction
Final Reducer		Planetary Reduction
Tire		17.5-25 L-3 12PR TT
BRAKE SYSTEM	Service Brake	Full Hydraulic Wet Brake
	Setting Pressure	0.70-0.78MPa
	Parking Brake	Flexible Shaft Controlled Caliper Brake
STEERING SYSTEM	Type	Hydraulic Load Sensing System
	Pump	246L/min · 2200rpm
	System Pressure	14MPa
	Cylinder Type	Double Acting
HYDRAULIC SYSTEM	Steering Angle	±35°
	Type	Joystick Control (Single-lever)
	Pump	246L/min · 2200rpm
	Control Valve	2 Spool
SERVICE REFILL CAPACITY	System Pressure	16MPa
	Cycle Time (Sec)	10.5
	Fuel Tank (L)	200L
	Hydraulic Tank (L)	165L
	Crankshaft (L)	17L
	Transmission (L)	37L
	Front Axle/Rear Axle (L)	18L/18L

CONFIGURATION

Cummins EPA Tier 4 F/ EU Stage V
LONKING Transmission
Electronic Powershift Control
Wet Axles
Joystick Working Control (Single-lever)
ROPS&FOPS Cabin
LCD Dashboard
Air Conditioner
MP3
Air Suspension Seat

OPTIONAL

Oil-bath Air Filter
17.5R25 ★★ L-3 TL
3rd Spool for Auxiliary Function
Sliding Cabin Window
Electric Heating Rear Window
Lockable Oil Tank Cap
Rear View Camera
Bucket (2.0m ³)
Enlarged Bucket (2.3m ³)
Coal Bucket (2.5m ³)
Log Grapple
Grass Grapple
Side Tip Bucket
Log Fork
Quick Hitch Coupler
Quick Hitch Bucket
4in1 Bucket (Quick Hitch Only)
4in1 Bucket (Quick Hitch Only)

LONKING 龙工

Efficiency Rules the Future



CDM835H WHEEL LOADER

The following blank can be used for notes or comments

For more information on Lonking products, please contact our local agent:

Lonking, LONKING CDM Series and their respective logos, as well as corporate identity in this leaflet are trademarks of Lonking Holdings Ltd. and may not be used without written permission.

2024/01

Specifications and design are subject to change without prior notice. Machines shown may not include optional accessories.

LONKING (FU JIAN) INTERNATIONAL TRADE CO., LTD.

Add: 26 Minyi Road, Xinqiao, Songjiang Industrial Zone, Shanghai

E-mail: export@lonking.cn <http://www.lonkinggroup.com>

Tel: +86-21-3760 2242

- RATED POWER: 105kW/2200rpm
- BUCKET CAPACITY: 1.8m³
- RATED PAYLOAD: 3500kg
- OPERATING WEIGHT: (11400)11500±300kg